



ew 100 G4

EM 100 G4
SKM 100 G4
SKM 100 G4-S
SK 100 G4

Quick Guide	Kort vejledning
Kurzanleitung	Ръководство
Guide rapide	Γρήγορος οδηγός
Guía rápida	Κίσα Kilavuz
Guía de inicio rápido	Краткая инструкция
Guia rápido	快速指南
Beknopte handleiding	快速使用指南
Krótká instrukcja obsługi	クイックガイド
Snabbguide	퀵 가이드

SENNHEISER



www.sennheiser.com/download

Sennheiser electronic GmbH & Co. KG

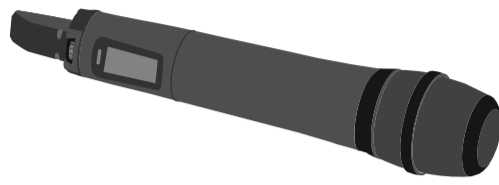
Am Labor 1, 30900 Wedemark, Germany
www.sennheiser.com

Printed in Germany, Publ. 01/24, 575860/A04

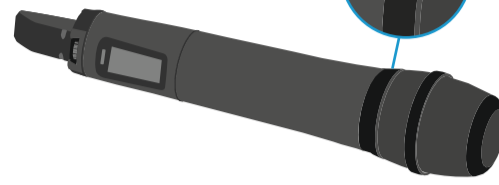
EM 100



SKM 100



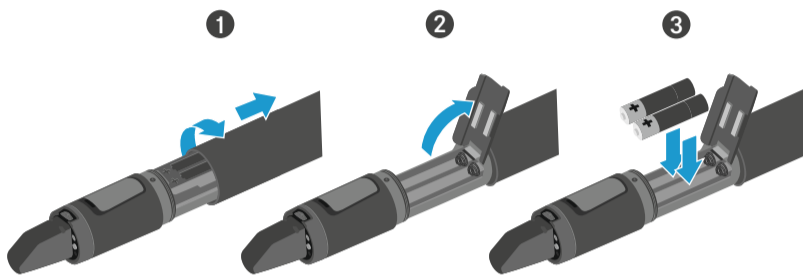
SKM 100-S



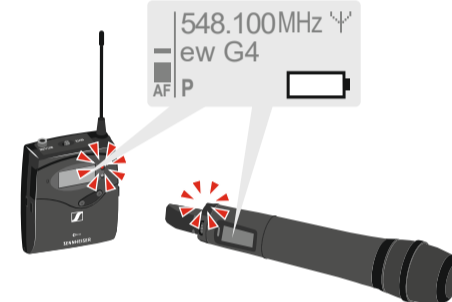
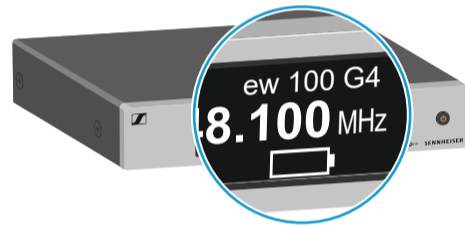
SK 100



Battery



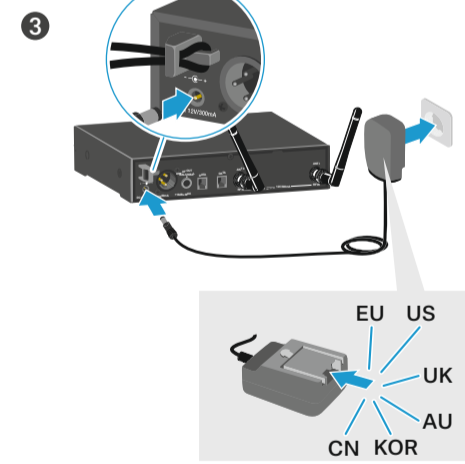
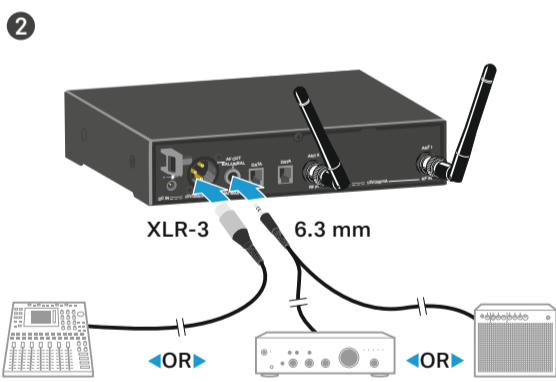
Low Battery



	100 %	> 8 h
	70 %	4 - 6 h
	30 %	2 - 3 h

LOW BATT

Setup



On

EM	SK/SKM
short on	on
long on + RX mute	on + RF mute

OR

Off

EM/SK/SKM
long off

Instruction Manual

Menu

UP ESC SET ON/OFF SYNC DOWN

SET

Main menu	"Easy Setup"	Extended menu "Advanced Menu"
"Menu"	Reset List	Tune
Squelch	Current List	Mute Mode
Easy Setup	Scan New List	Cable Emulation
Frequency Preset	Exit	Pilot Tone
Name		LCD Contrast
AF Out		Reset
Equalizer		Software Revision
Auto Lock		Exit
Advanced		
Exit		

Standard display

Change frequency

Sync

Bank . Channel Frequency Name Auto lock

Diversity

Radio frequency level (RF)

Squelch

Audio level (AF)

Sensitivity

Pilot tone

Mute

Battery

A B C

Instruction Manual

Change frequency

Frequency

Peak hold

Audio level

Sensitivity

Pilot tone

Mute

Battery

RF on

Auto lock

A B C

Menu

DOWN UP SET ON/OFF ESC

SET

Main menu	SK
"Menu"	Extended menu "Advanced Menu"
Sensitivity	Tune
Frequency Preset	Mute Mode
Name	Cable Emulation
Auto Lock	Pilot Tone
Advanced	LCD Contrast
Exit	Reset
	Software Revision
	Exit

SKM

Extended menu "Advanced Menu"
Tune
Mute Mode (SKM -S)
Pilot Tone
LCD Contrast
Reset
Software Revision
Exit

Auto lock

EM

- 1
- 2
- 3

Locked Δ/∇ Unlock?

SET Δ/∇ SET

SK

- 1
- 2
- 3

Locked Δ/∇ Unlock?

SET Δ/∇ SET

SKM

- 1
- 2
- 3

Locked \square Unlock?

SET \square SET

10 s → Auto lock

Instruction Manual

Mute

Instruction Manual

short

RX Mute On?

RX Mute Off?

SET

EM 100

SKM 100

short

RF Mute On?

RF Mute Off?

SET

New frequency

Squelch

- 1

High 40

Middle 25

Low 10

RF

SK 100

SKM 100-S

Menu Advanced Δ/∇ SET

Advanced Mute Mode Δ/∇ SET

Mute Mode AF On/Off Δ/∇ SET

SK only: Mute Mode RF On/Off Δ/∇ SET

AF Mute

Mute On

Mute Off

RF Mute

Mute On

Mute Off

Change frequency

- 2 SKM/SK off!
- 3

Easy Setup EM	Frequency Preset EM, SK, SKM
Menu Easy Setup Δ/∇ SET	Menu Frequency Preset Δ/∇ SET
Easy Setup Scan New List Δ/∇ SET	B.Ch. 1.1 Δ/∇ SET
Scan New List 734...776 MHz WAIT 30s	Frequency Preset B.Ch. 15.6 Δ/∇ SET
Easy Setup Bank 1...20 Δ/∇ SET	Frequency Preset B.Ch. 15.6 Δ/∇ SET
Free: 0...12	Stored
Easy Setup B.Ch: 1...12 Δ/∇ SET	
Sync 758.200 MHz	
Stored	

No frequency → 1 Squelch: Middle ...

Instruction Manual

Sync

- 4

≤ 10 cm

≤ 4"

OR

SYNC

OR

× SYNC

Instruction Manual

Multichannel - Easy Setup

Bank 1...20; U

Channel 1...12

max. 12 channels

>12 channels → Instruction Manual

RJ 10

Instruction Manual

Sensitivity

- 5

Menu Sensitivity Δ/∇ SET

-24dB

-60 dB ... 0 dB

-48 dB ... 0 dB

AF PEAK

Instruction Manual

AF out

- 6

Menu AF Out Δ/∇ SET

+18 dB

LEVEL

-24 dB ... +24 dB

Instruction Manual

SKM

Correct holding position

Incorrect holding position

Incorrect holding position

Incorrect holding position

ME 2 | ME 4

ME 2

25 cm (10")

ME 4

ME 3-II

2...3 cm (1")