



ew IEM G4

- Quick Guide
- Kurzanleitung
- Guide rapide
- Guida rapida
- Guía de inicio rápido
- Guia rápido
- Beknopte handleiding
- Krótka instrukcja obsługi
- Snabbguide
- Kort vejledning
- Pikaohje
- Γρήγορος οδηγός
- Kısa Kılavuz
- Краткая инструкция
- 快速指南
- 快速使用指南
- クイックガイド
- 퀵 가이드

SENNHEISER



www.sennheiser.com/download

Sennheiser electronic SE & Co. KG

Am Labor 1, 30900 Wedemark, Germany
www.sennheiser.com

Printed in Germany, Publ. 10/24, 575863/A03

SR IEM



EK IEM



Battery



Low Battery

548.100MHz Y Standard ew IEM G4

	100 %	> 8 h
	70 %	4 - 6 h
	30 %	2 - 3 h

LOW BATT

On

short on

CLICK!

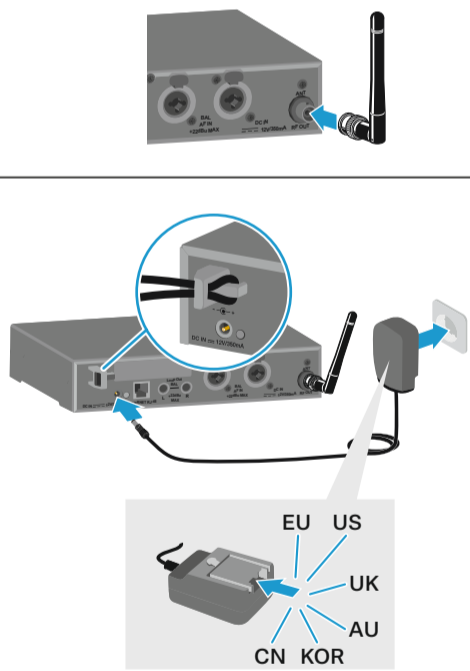
548.100MHz Y Standard ew IEM G4

Off

long standby

CLICK!

Setup



Standard display

Instruction Manual

Frequency Bank . Channel Name Warnings

PEAK PEAK B.Ch: U1.16 ew IEM
0 0
-10 -10 548.100 MHz RF Mute
-20 -20
-30 -30 Y Standard
-40 -40 Sensitivity: -18dB

Audio level (mono) Sensitivity Mono
Audio level (stereo) Sensitivity Stereo
Transmission Power Input sensitivity Auto lock

LEDs

Warnings LED
Sync LED

Instruction Manual

PEAK PEAK B.Ch: U1.16 ew IEM
0 0
-10 -10 548.100 MHz RF Mute
-20 -20
-30 -30 Y Standard
-40 -40 Sensitivity: -18dB

RF level Frequency Auto lock
Audio level Sensitivity MUTE Battery
Pilot tone Mute

A B
548.100MHz ew IEM G4 Balance
L=R

Menu

UP DOWN ESC SET

SET → Main menu "Menu"
Sensitivity
Mode
Easy Setup
Frequency Preset
Name
Auto Lock
Advanced
Exit

Extended menu "Advanced Menu"
Tune
Sync Settings
RF Power
Fullscreen Warnings
Brightness
Reset
IP-Address
Software Revision
Exit

"Fullscreen Warnings"
AF Peak
RF Mute
Exit

Instruction Manual

SET DOWN UP SET ESC

SET → Main menu "Menu"
Squelch
Easy Setup
Frequency Preset
Name
Balance
Mode
High Boost
Auto Lock
Advanced
Exit

"Easy Setup"
Reset List
Current List
Scan New List

Extended menu "Advanced Menu"
Tune
Pilot Tone
Limiter
Volume Boost
LCD Contrast
Engineer Mode
Reset
Software Revision
Exit

Instruction Manual

Stereo

6.3 mm

XLR-3

AUX

OR

SR

EK

Menu
Mode
Stereo

Instruction Manual

Mono

6.3 mm

XLR-3

AUX

OR

SR

EK

Menu
Mode
Focus

Advanced Menu
Pilot Tone
Inactive

Instruction Manual

Phones

VOLUME

6.3 mm

VOL < 70 %

Auto lock

SR

1 2 3

Locked Unlock?

SET SET

10 s Auto lock

EK

1 2 3

Locked Unlock?

SET SET

Instruction Manual

Sync

SYNC

≤ 10 cm
≤ 4"

OR

SYNC

Instruction Manual

Sensitivity

-42 dB ... 0 dB

Menu
Exit
Sensitivity
Mode

-18 dB

Squelch

Menu
Squelch
9 dB

RF

5 dB

Mute

RF Mute On?

RF Mute Off?

SET

Instruction Manual

Network Control

WSM
Media Control

ETHERNET

Multichannel - Easy Setup

Bank 1 ... 20; U1 ... U6
Channel 1 ... 16

max. 16 channels

1 2 3

Menu
Easy Setup
Frequency Preset

Menu
Easy Setup

Instruction Manual

RJ 45