



MKE 1 - Care and Cleaning Instructions

The MKE 1 is a high-quality, sub-miniature clip-on microphone which combines outstanding sound quality and rugged design with extremely small dimensions. To ensure continuous optimum performance, please observe the following care and cleaning instructions.

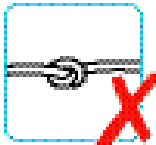
General care instructions



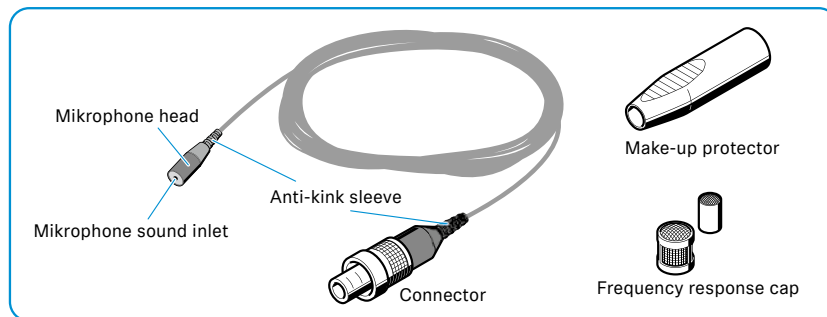
- ▷ Use the MZC 1-1 and MZC 1-2 frequency response caps and the MZC 1-3 make-up protectors to avoid soiling and dysfunctions.



- ▷ Store the MKE 1 in a dry, dust-free environment.



- ▷ Avoid extreme bending and tearing of the cable.
- ▷ Avoid knots in the cable.

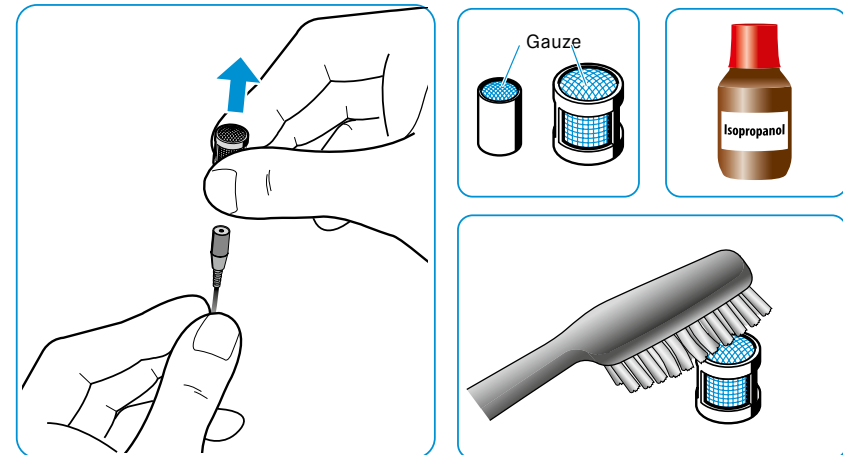


The MZC 1-1 and MZC 1-2 frequency response caps

- ▷ To wear the MKE 1 directly on the skin, use the large MZC 1-2 frequency response cap which offers an extended protection against the ingress of sweat.
- ▷ Regularly clean or replace the frequency response caps to avoid sound alterations.

Cleaning after use

- ▷ Remove the frequency response cap from the microphone capsule. Hold the microphone by the cable and **not** by the anti-kink sleeve.
- ▷ Use a **fine** bristle brush and isopropanol to remove make-up residues and other buildup from the gauze.

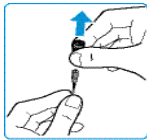




The microphone capsule

The microphone capsule features an overmold which only serves as an anti-kink sleeve. The microphone capsule itself is protected from moisture.

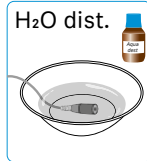
Cleaning after use



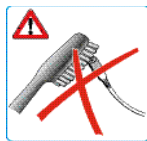
- ▷ Remove the frequency response cap from the microphone capsule. Hold the microphone by the cable and **not** by the anti-kink sleeve.



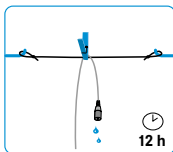
- ▷ Shake the microphone capsule to remove excess moisture.



- ▷ Bathe the microphone capsule in distilled water to loosen make-up residues and other soiling.



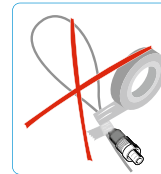
- ▷ Do **not** use a cloth or a bristle brush to clean the microphone sound inlet.



- ▷ Dry the microphone for approx. 12 hours. The microphone sound inlet has to point downwards during drying.

The cable

The anti-kink sleeve on the connector and the microphone is designed to meet the highest requirements in quality. The use of additional adhesive tapes or shrink-on tubes can damage the material and reduce the service life of the cable.



- ▷ Only use lavalier tape (LAV-Tape) to attach the cable to the skin.

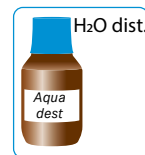
Lavalier tape (LAV-Tape) is available as an original Sennheiser accessory.

Cleaning after use



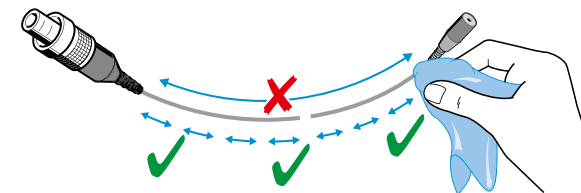
- ▷ Use a cloth or a **fine** bristle brush and isopropanol to remove make-up residues or other soiling.

NOTE: Particular hints for MKE 1 - musical (M) variants



- ▷ Only use distilled water and a slightly damp cloth for cleaning the cable.

- ▷ **When cleaning** be extremely careful, only use **low pressure**, only clean little **sections at a time**. Otherwise beads may occur.



- ▷ **Do not** use isopropanol! It may damage the surface of the cable.